



Deploying Read&Write for Windows using the multi-user setup tool

Prerequisites

- Microsoft .Net Framework 4.6
- It is recommended to have the Read&Write software already installed on the computer before proceeding with the steps below

Let's Get Started

Step 1.

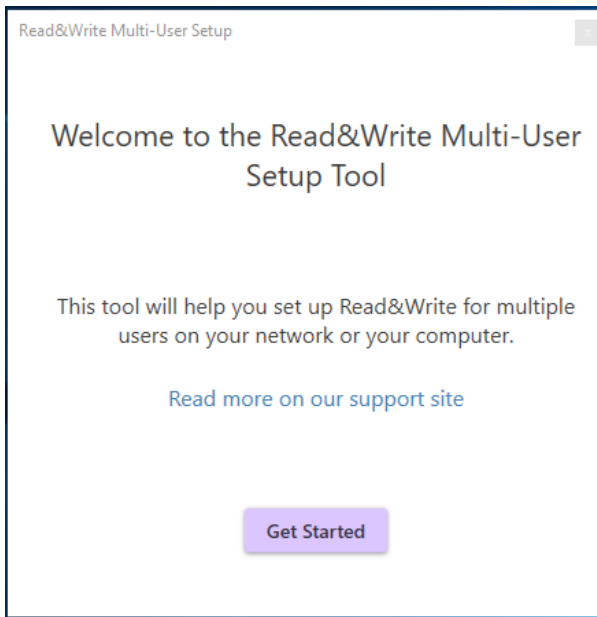
Download the [multi-user setup](#) tool

Step 2.

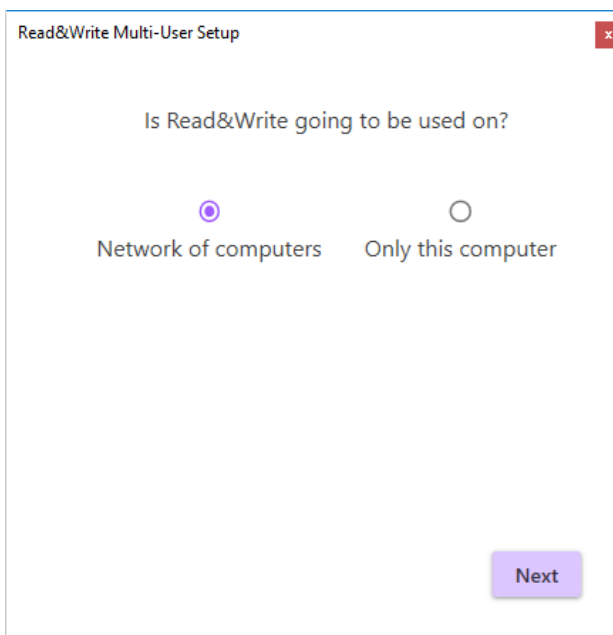
Run the **Read&Write Multi User Setup.exe**. This will install the application to your computer and when finished, you'll find a **shortcut** to the application on your **Desktop**.

Step 3.

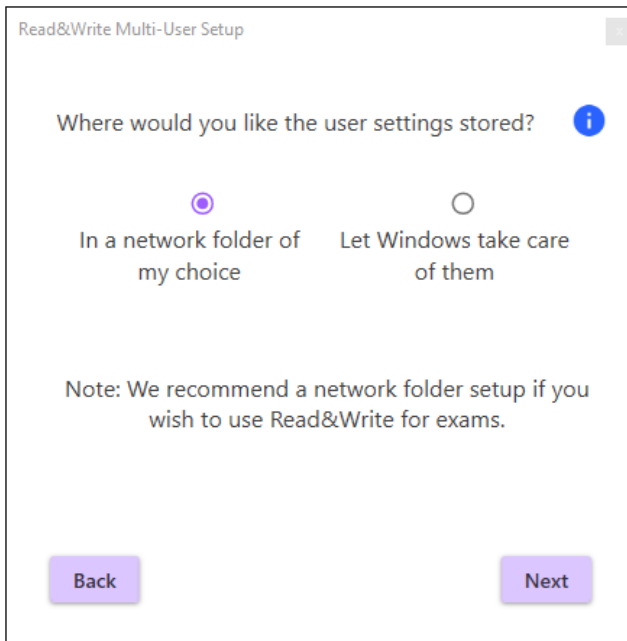
Click the **Get started**



Step 4.
Select Network of computers



Step 5.
Decide **where** you want your **users' settings to be stored** and click **Next**
(note: the destination folder should be accessible to all users)



In a network folder of my choice - this will allow you to specify a folder on your network. This folder must be writable and accessible to all users and admins. (Please note: This is required for exams.)

Let Windows take care of them - this will default to storing user settings in the user's roaming profile.

Step 6.

If you selected **In a network folder of my choice**, type in the **UNC path** or **browse** to the location of that folder and then click **Next**



Read&Write Multi-User Setup

Choose a **network folder** that Read&Write will use for the user settings

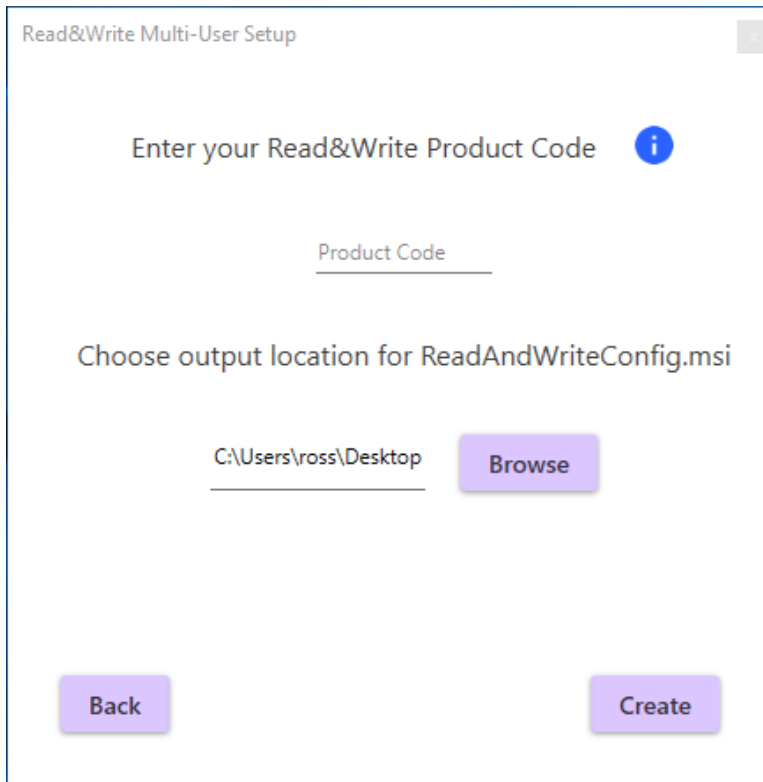
Choose a location

This should be a shared folder on your network with read/write permissions.




Step 7.

Enter your **Product Code**. This can be found in your onboarding email received upon purchasing Read&Write.

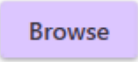


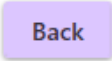
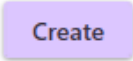
Read&Write Multi-User Setup

Enter your Read&Write Product Code 

Product Code

Choose output location for ReadAndWriteConfig.msi

C:\Users\ross\Desktop 

Step 8.

Choose where you would like to save the MSI that will be created. This will default to your desktop

Step 9.

Click **Create**



Step 10.

Deploy this MSI along with the Read&Write software across your network using your preferred deployment methods. When your end users launch Read&Write, they will not be prompted to log into the program

